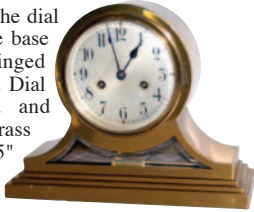


517. French porcelain cased clock, 11" tall, decorated with gold striping and painted flowers. There are no breaks, chips, or repairs. Beveled glass, brass sash, good porcelain dial and original hands. Typical round solid plate brass 8 day movement, outside count, and bell strike. The movement is not signed, at least on the back plate, has a correct pendulum and a metal back cover. Came with a large collection belonging to an elderly repairman, and the clocks had not been oiled in many years. The movement is in good condition, just dry. \$100-\$200.



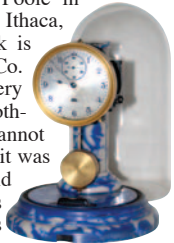
518. Gustav Becker mantle clock, excellent brass case and other appurtenances. It has two beveled glasses in front, a large one over the perfect silver dial, and another below the dial in an unusual shape. The base has a layered look, hinged bezel and original hands. Dial numerals are recessed and black filled. The solid brass case is 13" wide, 10.5" high, and overall in bright clean condition. 8 day movement is signed, striking a standing gong on half hours and hours. It has a very unusual pendulum, one I have never seen. I suppose the clock is art deco style, probably ca. 1920-1930 era. There is no back door. Not sure what type it may have had. \$200-\$300.



519. German or French wall clock, has some influence of both. There is no name on the back plate of the 8 day movement, nor on the very fancy dial. The case is complete except for the bottom finial. As it is the case is 19.5" high, very stylish, simulated metal border around the front, small brass buttons, case is ebony, with a back cover, cuckoo style, with the gong attached to the back and is held in place like a cuckoo door. Nice dial and original hands, two latching side doors to view the movement. Movement is square, solid plate, outside count, serial number 168090. Brass pendulum we believe to be original. \$200-\$300.



520. Poole battery operated electric clock manufactured by the Poole Manufacturing Co. a division of the Morse Chain Company. Morse bought Poole in 1926 and moved the company to Ithaca, NY. The silver dial on this clock is signed, Poole and Morse Chain Co. We researched everything and every place about Poole but could find nothing about this unusual case. I cannot explain what it is made of or how it was made but if I were to guess I would say it is the same process that was used to make the bakelite cases that you normally see with the Poole clocks. The clock, without the original glass dome, is 9" high, complete with three levelers, a level on top of the base, correct pendulum, and movement. The top of the base is also signed Poole. We did not put batteries in the back to test the movement. Ly-American Clocks, Volume 2, pages 170-171. \$300-\$500.



521. Seth Thomas Clock Co. crystal regulator, "Empire No. 200 Extra", ca 1921. The case is 9.75" tall, has four beveled glasses, all very good, correct imitation mercury pendulum, one piece porcelain dial with the usual tiny chips around the winding arbors and chips between 7 and 8. The dial is signed. The movement is marked "120B", is running, and striking hours and half hours on the Cathedral gong. Nice clean case, polished, very little wear. Ly-Seth Thomas, pages 260-261. \$150-\$300.



522. German brass shelf clock with a disc pendulum, ca 1920-1930. The porcelain dial is signed "Germany", and the 400 day movement is signed, "Made In Germany". Original disc, winding key, round feet, hinged back, hands, and beveled glass are all original and in excellent condition. The clean and polished brass case is a tad over 10" high, and overall is a near perfect clock. \$200-\$300.



523. Seth Thomas Clock Co. Plymouth Hollow, (on the label) ca 1855. Miniature rosewood case is 9" high. There is some loss of veneer on the OG type base, and skinned other places. Original glasses, original minute hand, broken hour hand, correct and possibly original brass bob and key. Original painted dial is slightly soiled but is very nice to be over 150 years old. Large iron bell for the alarm, complete paper label inside, and a C-Type movement. See Ly-Seth Thomas, page 217 and 215. \$150-\$250.



524. "Briggs Rotary Pendulum Clock, a Horolovar Reproduction", signed on the top plate of the movement. The clock has to be new, or near new, it is just to original and nice, clean and shining. Of course, it has had the glass dome over the movement since bought new. Wood base, metal feet, large movement winder underneath, perfect dial is signed, "Made In Germany", and a well made reproduction of the early Briggs/Welch rotary pendulum clocks. Everything in mint condition and comes with the original glass dome. With the dome in place it is about 7.5" high. \$200-\$300.



525. Seth Thomas Clock Co. Locomotive or Chronometer, brass cased clock. I can never identify my clocks of the ships bell type. They are never in the ST books. I pulled the dial and it is signed Seth Thomas, lever of course. The porcelain dial is signed "Schaffer & Budenberg / New York". They made steam engine indicators. The dial is bugged on the left side, around the 9, probably chipped on the edge by the lip on the bezel that goes into the bezel release slot. Heavy brass case with glass and hinged bezel. 8" diameter on top, 8.5" on the bottom. Made with 3 holes on the back plate for mounting. Ly-Seth Thomas, has several similar clocks. \$150-\$300.



526. "Roth Bros. / New York / U.S.A. / 8 Days", signed on the black night time dial of this WWII Chronometer. The Roth Bros., namely, Harry Roth, was asked by the U.S. Government at the beginning of WWII to supply a large number of chronometers to the armed services. The usual companies that made chronometers were not geared up to make them. Roth had a supply of brass cases and dials and had access to a large supply of Waltham, Longine, and other used marine movements, that they refurbished and put them together fairly quickly. They put some in gimbal boxes and some were made to bolt to the ships hull. This little clock is only 5.5" across, winds from the bottom, and is in near mint condition, and is running. I did not pull the dial to see what movement was used in this clock. \$200-\$400.



527. German tin clock. 8 day pendulum movement, front wind, and running. Overall in very nice condition. Dial signed with the crossed arrows insignia, Hamburg American Clock Co., and is signed, "8 Day / Germany". Excellent paint all over, original hands and pendulum, and printed instructions on the back. \$100-\$200.



528. English drop clock, ca 1880. Beautiful mahogany case, some brass and pearl inlays. Some of the wire inlay is missing on the bezel top, pearl is all intact. Pegged top, two side doors with latches, bottom door and latch, and a clear glass in the base. Typical heavy brass bezel, glass is cracked bottom right, new paper on the old dial pan. 8 day movement, strikes a bell on the hours, and it has a pendulum and key. It is not a cream puff but with a little work you can have a very nice clock. \$200-\$300.



529. Seth Thomas Clock Co. crystal regulator, "Empire No. 200", ca 1921. Gold finished case is 9.5" high, has a decent finish, only slight wear. Gold/brass dial is signed, original hands, and it is clean, hardly any wear. Four perfect beveled glasses, two door knobs, correct imitation mercury pendulum, and a hanging Cathedral gong. The round movement is signed and running, strikes the gong on half hours and hours. Ly-Seth Thomas, pages 260-261. \$200-\$300.



530. French mantle clock, ca 1880's. Wood case is 11" including the bronze urn/finial on top. Metal do dads on the sides, metal door knob on the back, and the brass sash and ring. The one piece porcelain dial is near perfect, beveled glass, and great old French hands. Round French 8 day time only movement, unsigned, running. Full wood back door with provenance going back to 1880. One good thing going for it, the pendulum and movement have the same serial number, "432". The case will need some work, the veneer has chipped around the base and there are some small chips, like paint flakes, off on the case body. Only a very few places. \$100-\$200.

